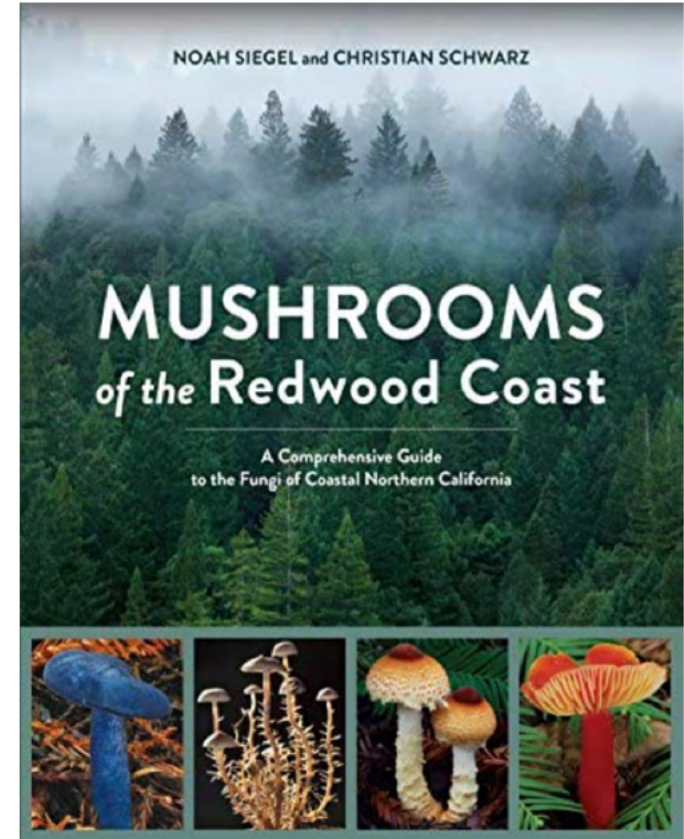
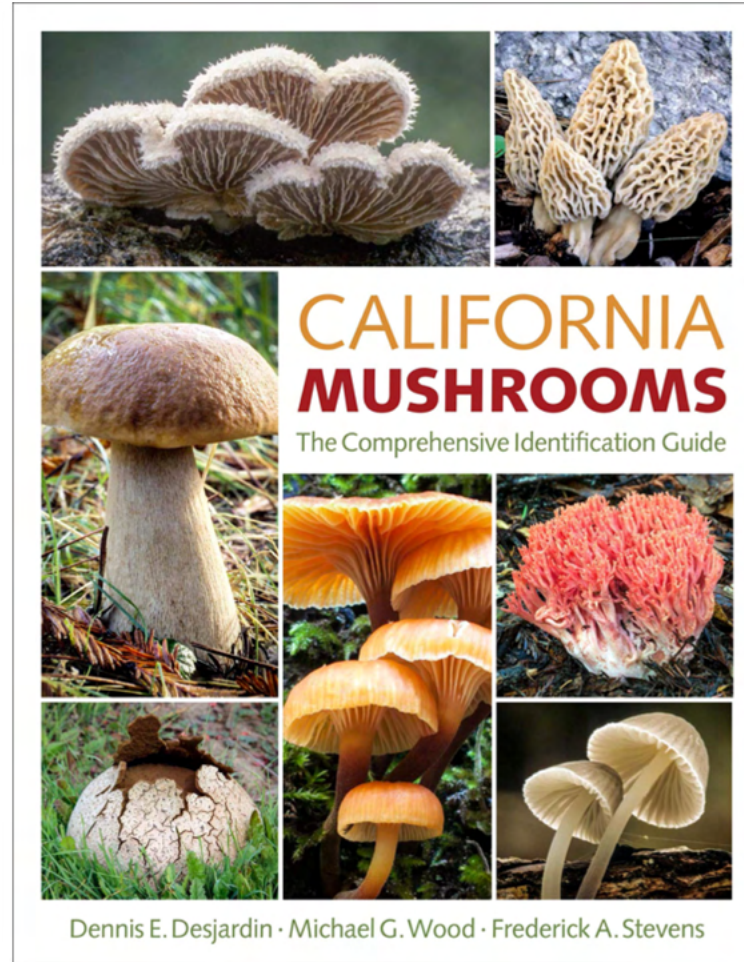
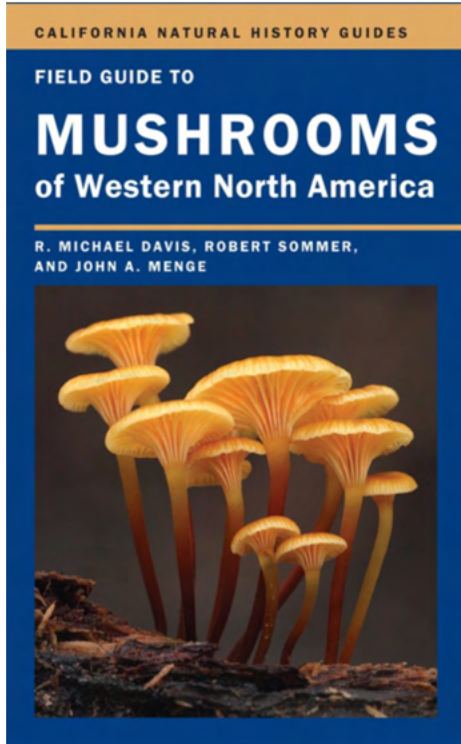




State of LA Fungi

May 23, 2023

Los Angeles Mycological Society



Fungi of Temperate Europe

The wheels

Thomas Læssøe & Jens H. Petersen

http://www.mycokey.com/Downloads/FungiOfTemperateEurope_Wheels.pdf



Gyrodon sp.

Santa Gabriel Mts. Stu Pickell, OCT 2022



Gyrodon sp.

Santa Gabriel Mts. Stu Pickell, OCT 2022





Disciseda sp.

Dave G., Nov. 2022



rock, not fungus

typical dried mud-lifting of fungus



Disciseda sp.

San Diego, RD May 2023





Clavulinopsis sp. and *Hygrocybe* sp.

Santa Monica Mts. Stu Pickell, Jan. 2023

Omphalina sp.

Stu Pickell



RD



ADD
OBSERVATIONS



Macrofungi of California's Chaparral Shrublands

Stats






Totals

358
Observations »






118
Species »

10
People »


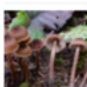

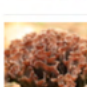
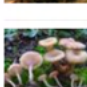
Most Observations

-  **stucumber**
142 observations
-  **acorncap**
131 observations
-  **possiblybuddha**
28 observations
-  **ekoberle**
20 observations
-  **emmashelton**
17 observations

Most Species

-  **acorncap**
33 species
-  **stucumber**
25 species
-  **possiblybuddha**
12 species
-  **emmashelton**
9 species
-  **ekoberle**
6 species

Most Observed Species

-  **Western Amethyst Laccaria**
7 observations
-  **Fiber Caps**
6 observations
-  **Earthstars**
6 observations
-  **Telephora**
6 observations
-  **Rosy Navel**
6 observations





Psathyrella sp.
San Gabriel Mts., RD May 2023



RD

Aquatic gilled mushrooms: *Psathyrella* fruiting in the Rogue River in southern Oregon

Jonathan L. Frank

*Department of Biology, Southern Oregon University,
Ashland, Oregon 97520*

Robert A. Coffan

*Department of Environmental Studies, Southern Oregon
University, Ashland, Oregon 97520*

Darlene Southworth¹

*Department of Biology, Southern Oregon University,
Ashland, Oregon 97520*

Habitat. Aquatic vegetation near the attachment of the underwater mushrooms included dense beds of *Scleropodium obtusifolium* and abundant gelatinous masses of cyanobacteria, *Anabaena* sp., with heterocysts. Terrestrial vegetation on surrounding stream banks was dominated by *Pseudotsuga menziesii* with *Pinus monticola* in the canopy and understory trees, *Alnus rubra*, *Acer circinatum* and *Cornus nuttallii*. Upland vegetation and riparian vegetation reached

the water's edge at all times of the year, including the late summer during the period of lowest flow.

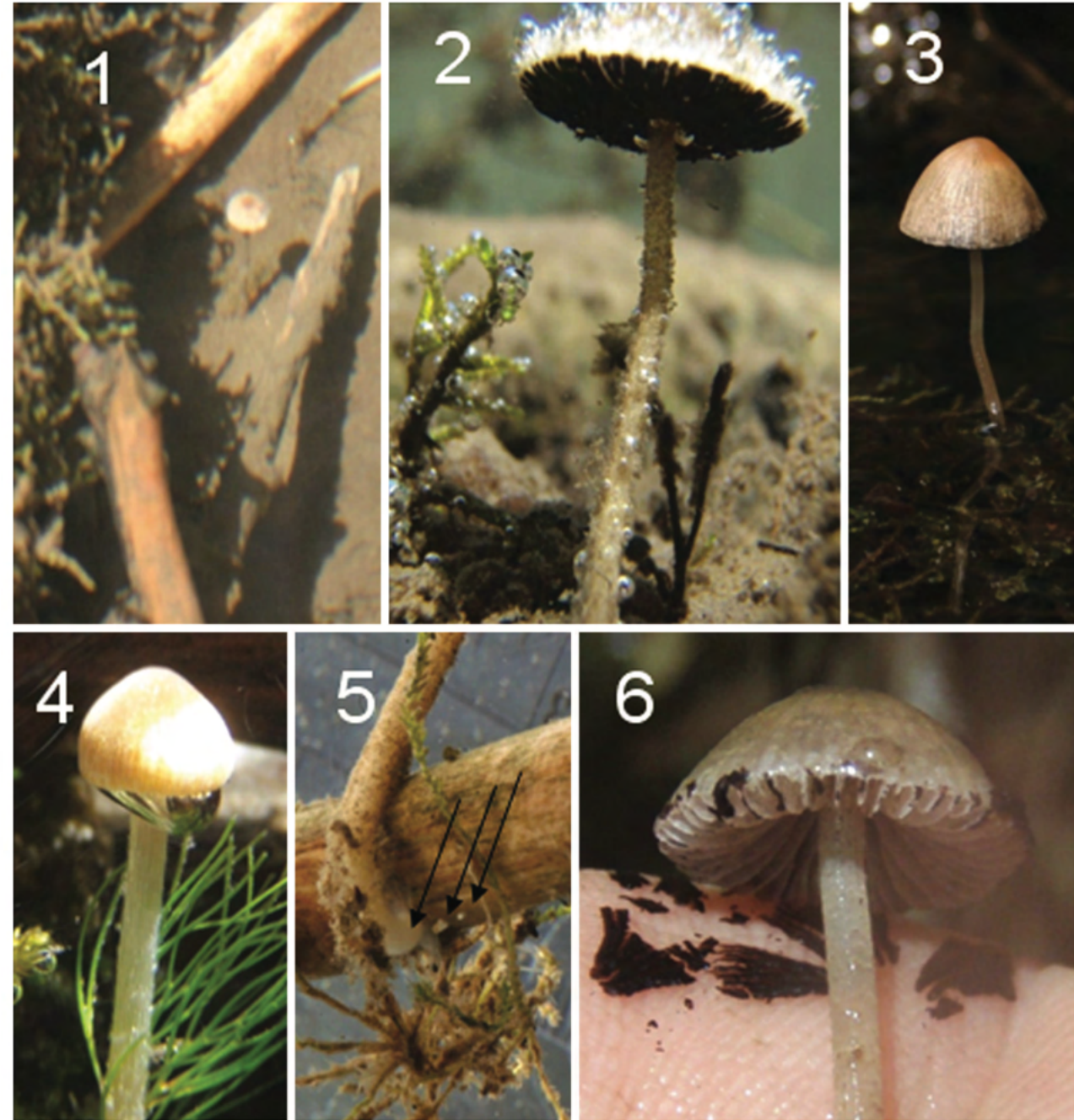
Organic carbon in the water sample totaled 0.52 mg/L, nitrate measured less than the testing equipment limit of 0.2 mg/L and total phosphorus less than 0.05 mg/L. Water temperature during field observations was 7–13.1 C; ambient air was 23–32.8 C.

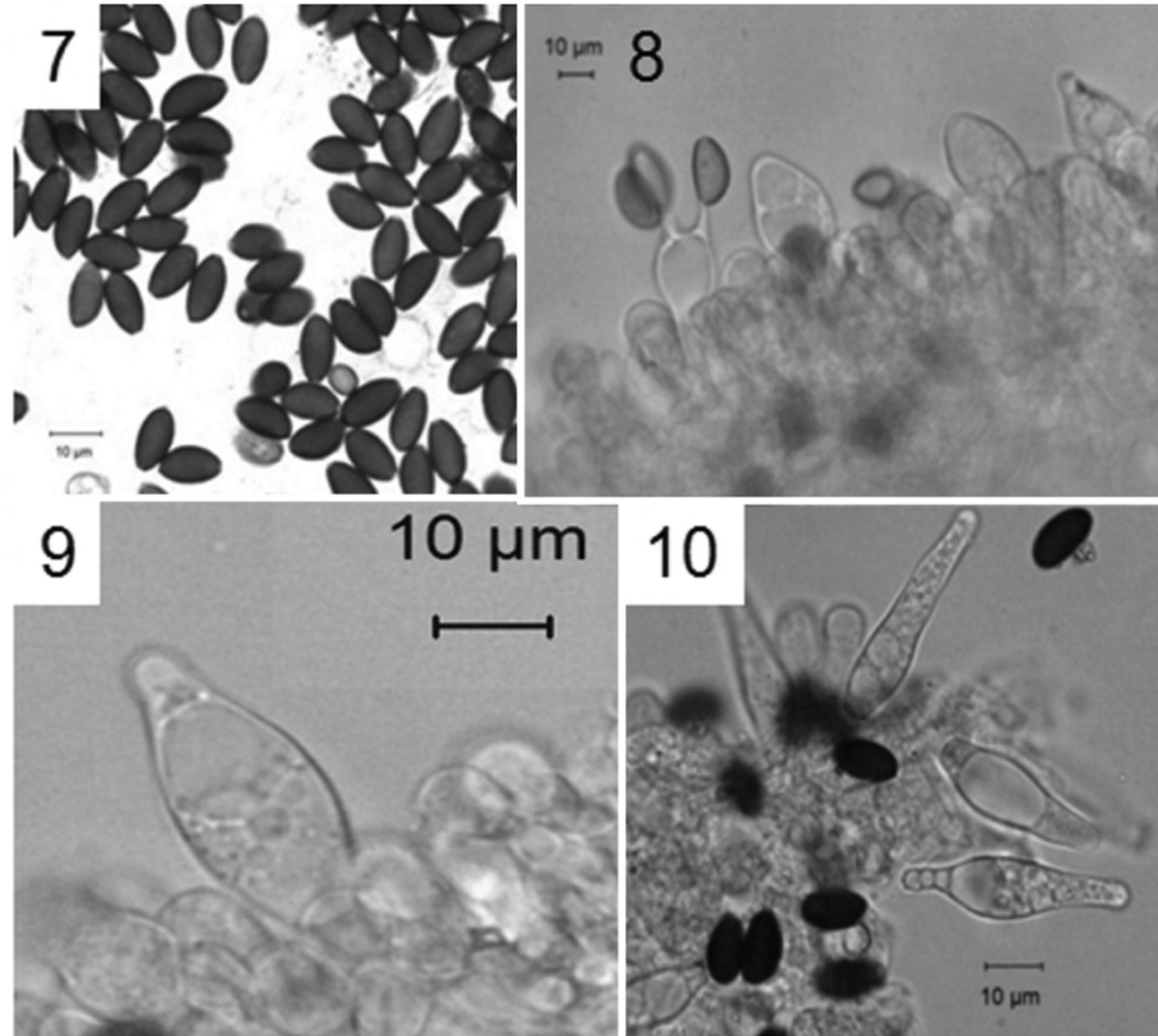
Known distribution. Oregon.

Etymology. In reference to the aquatic habitat.

HOLOTYPE: USA. OREGON: Jackson County. North of Prospect (42°51'42"N, 122°30'28"W), underwater in the Rogue River on wood, 8 Aug 2007, R.A. Coffan (*D. Southworth 1097* MICH).

Other specimens examined. See TABLE I.





FIGS. 7–10. *Psathyrella aquatica*. 7. Basidiospores. 8. Basidium with spores attached, also pleurocystidia. 9. Pleurocystidium. 10. Cheilocystidia. Bars = 10 µm.



Macrofungi of California's Chaparral Shrublands

ADD
OBSERVATIONS

Stats

Totals

358

Observations »

118

Species »

10

People »

Most Observations



stucumber
142 observations



acorncap
131 observations



possiblybuddha
28 observations



ekoberle
20 observations



emmashelton
17 observations

Most Species



acorncap
33 species



stucumber
25 species



possiblybuddha
12 species



emmashelton
9 species

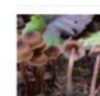


ekoberle
6 species

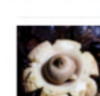
Most Observed Species



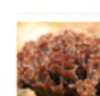
Western Amethyst Laccaria
7 observations



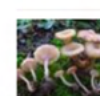
Fiber Caps
6 observations



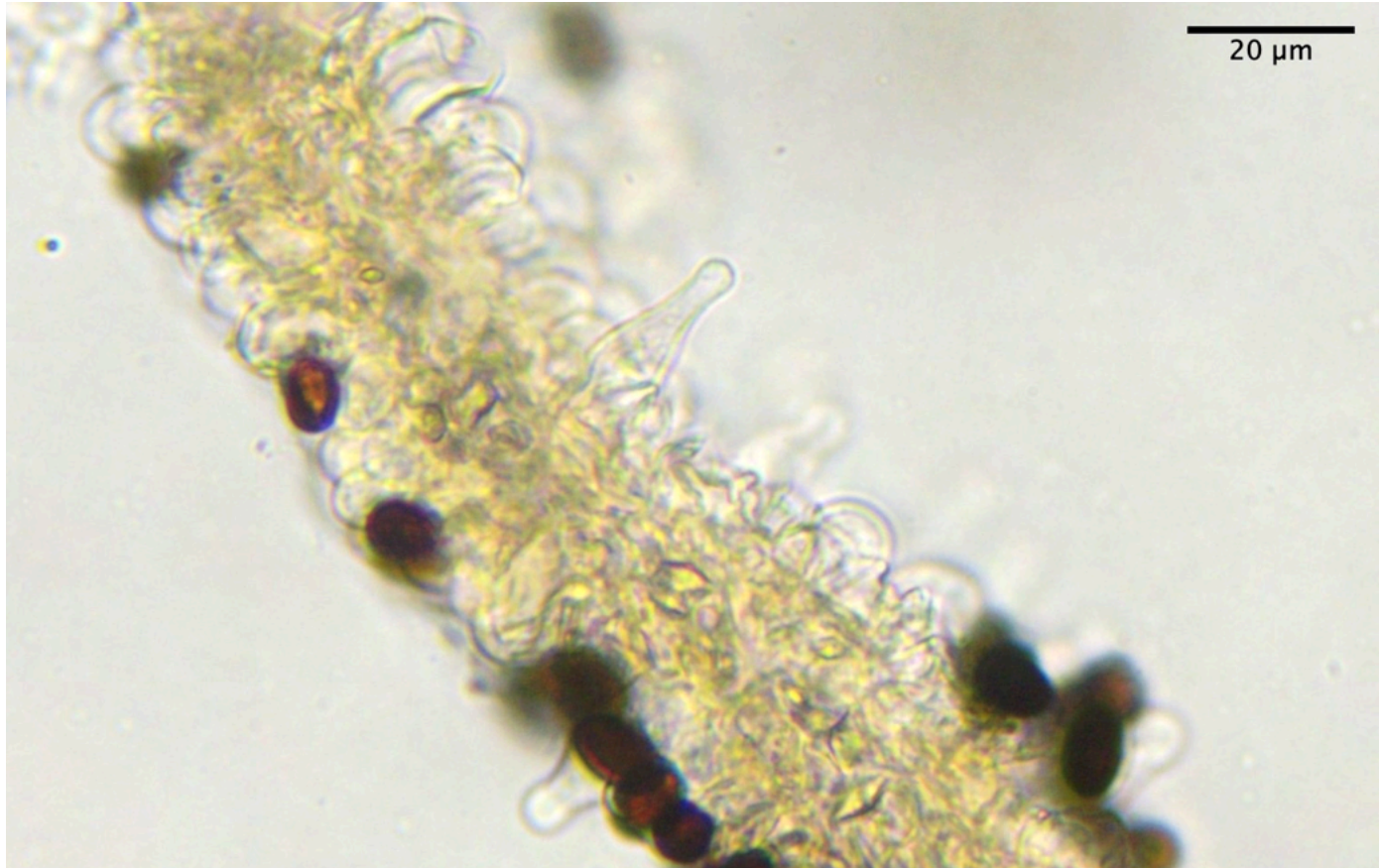
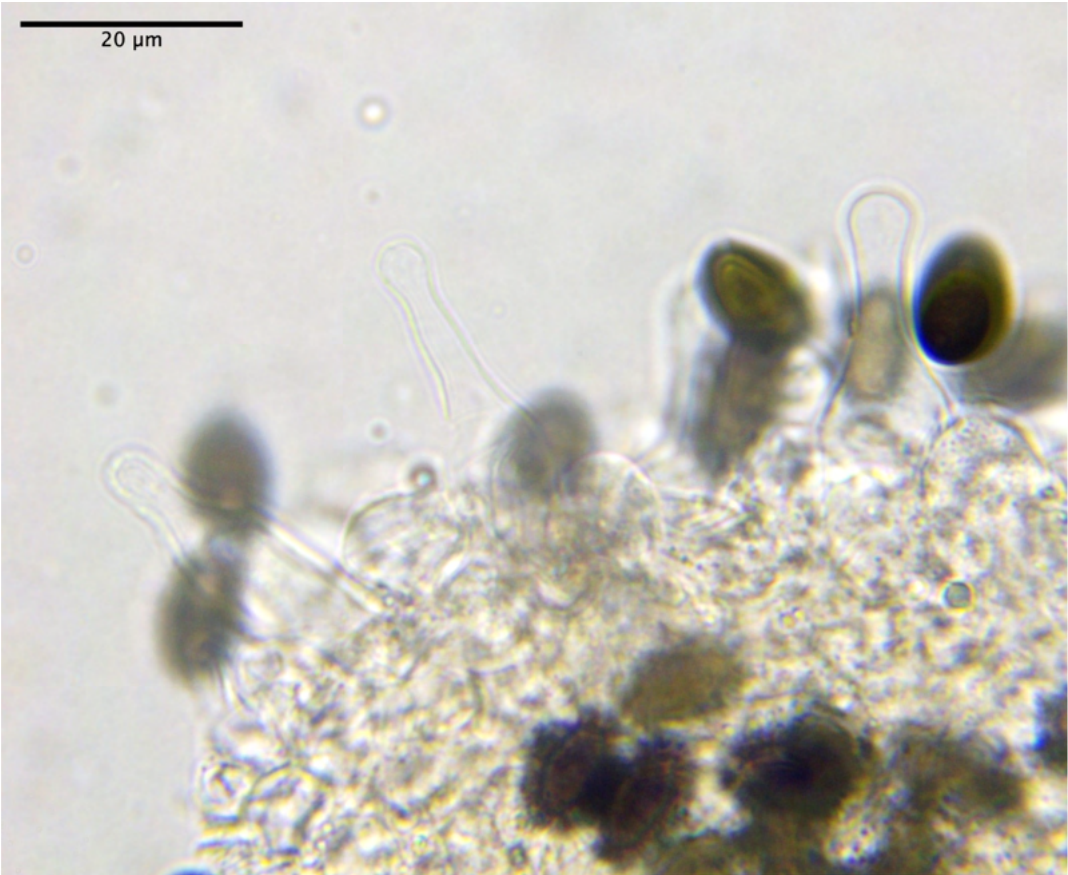
Earthstars
6 observations

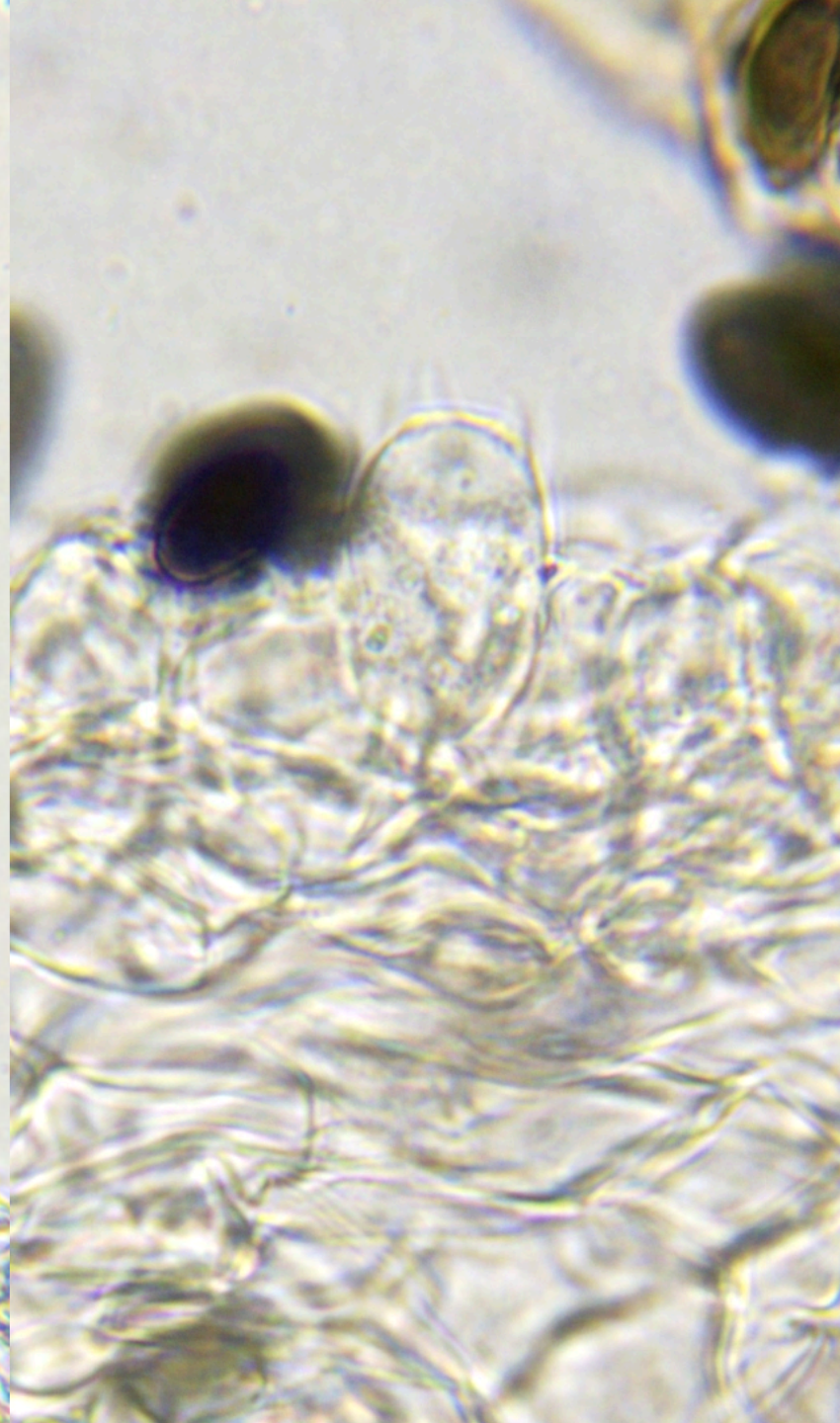


Telephora
6 observations



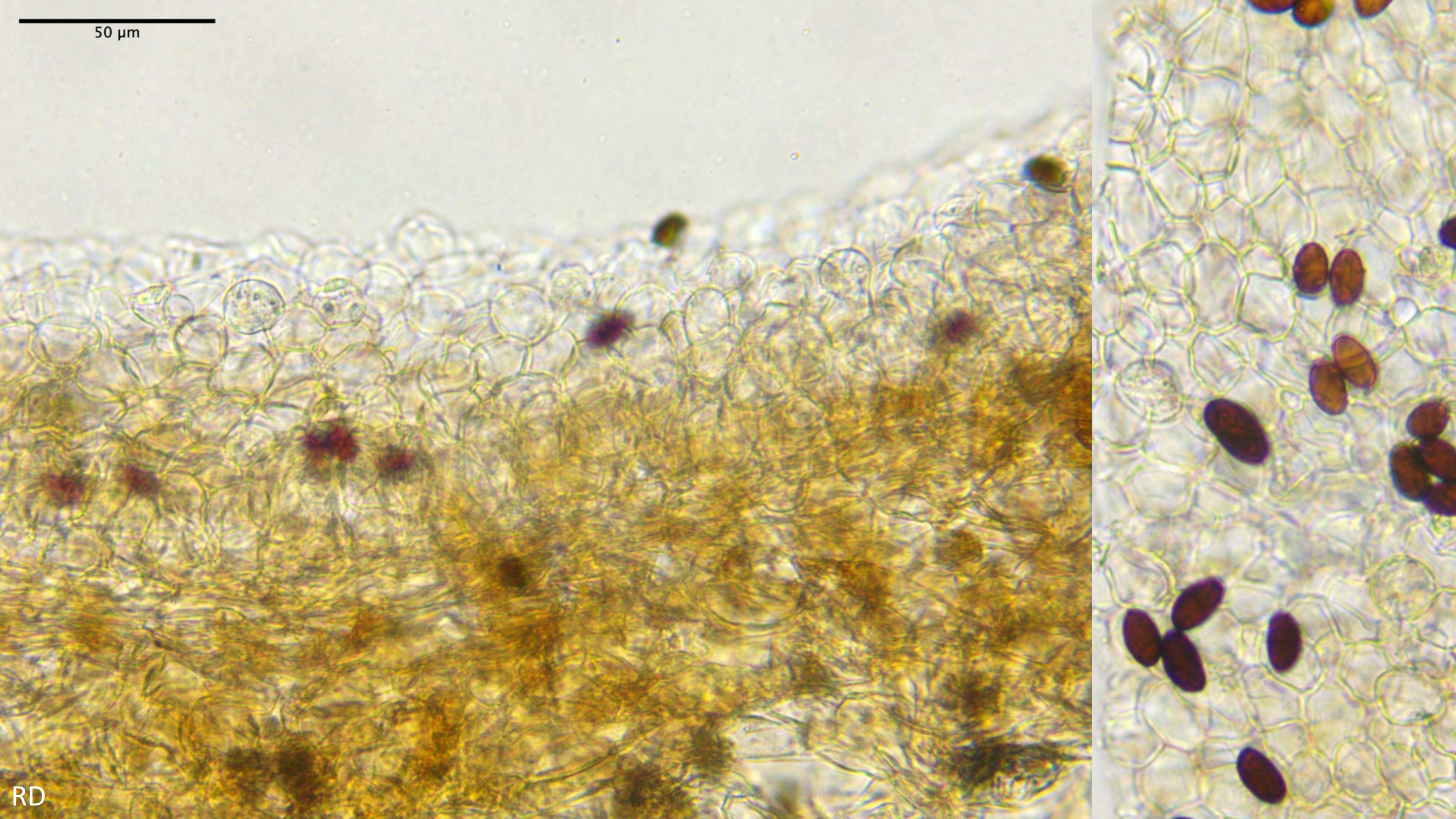
Rosy Navel
6 observations



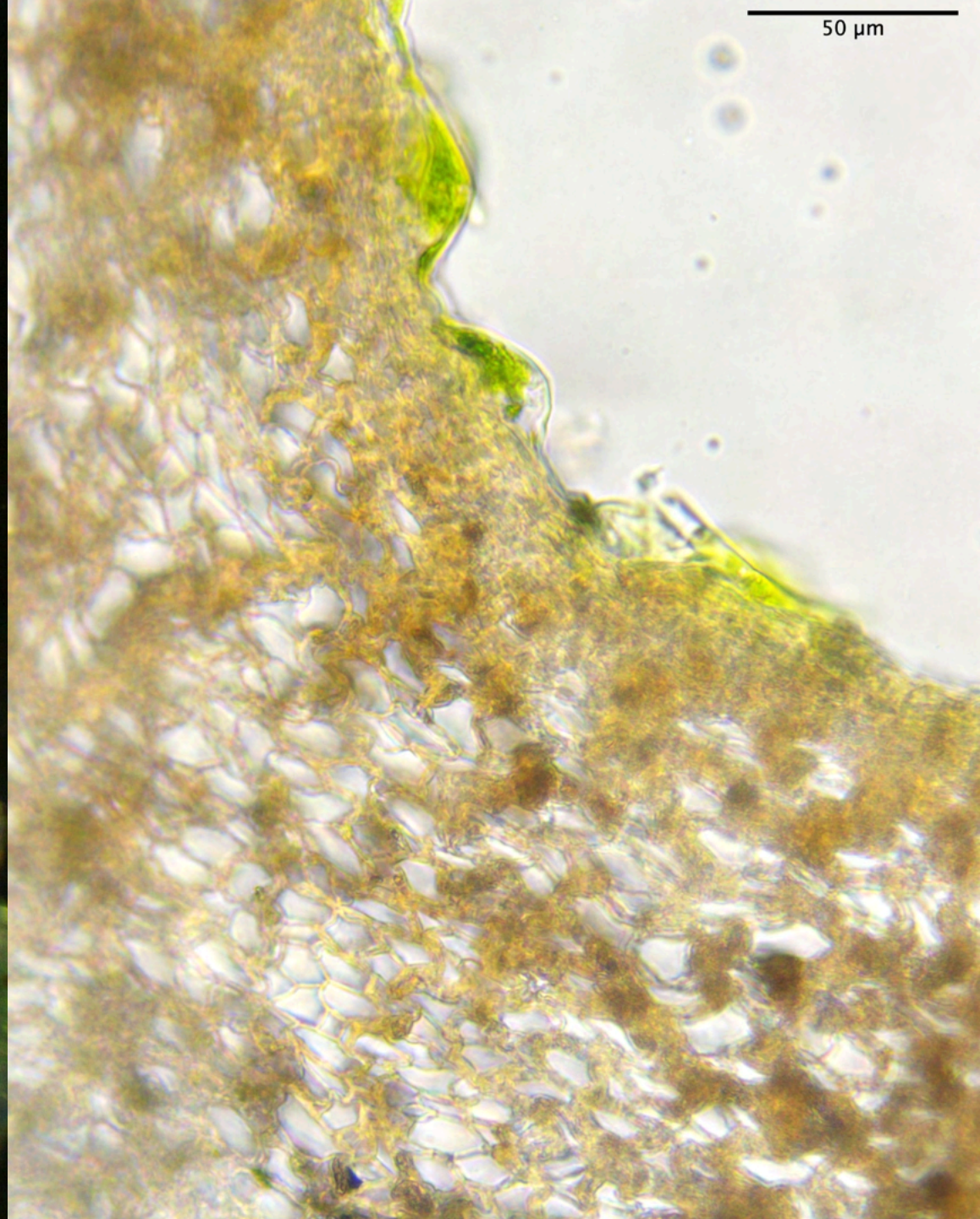
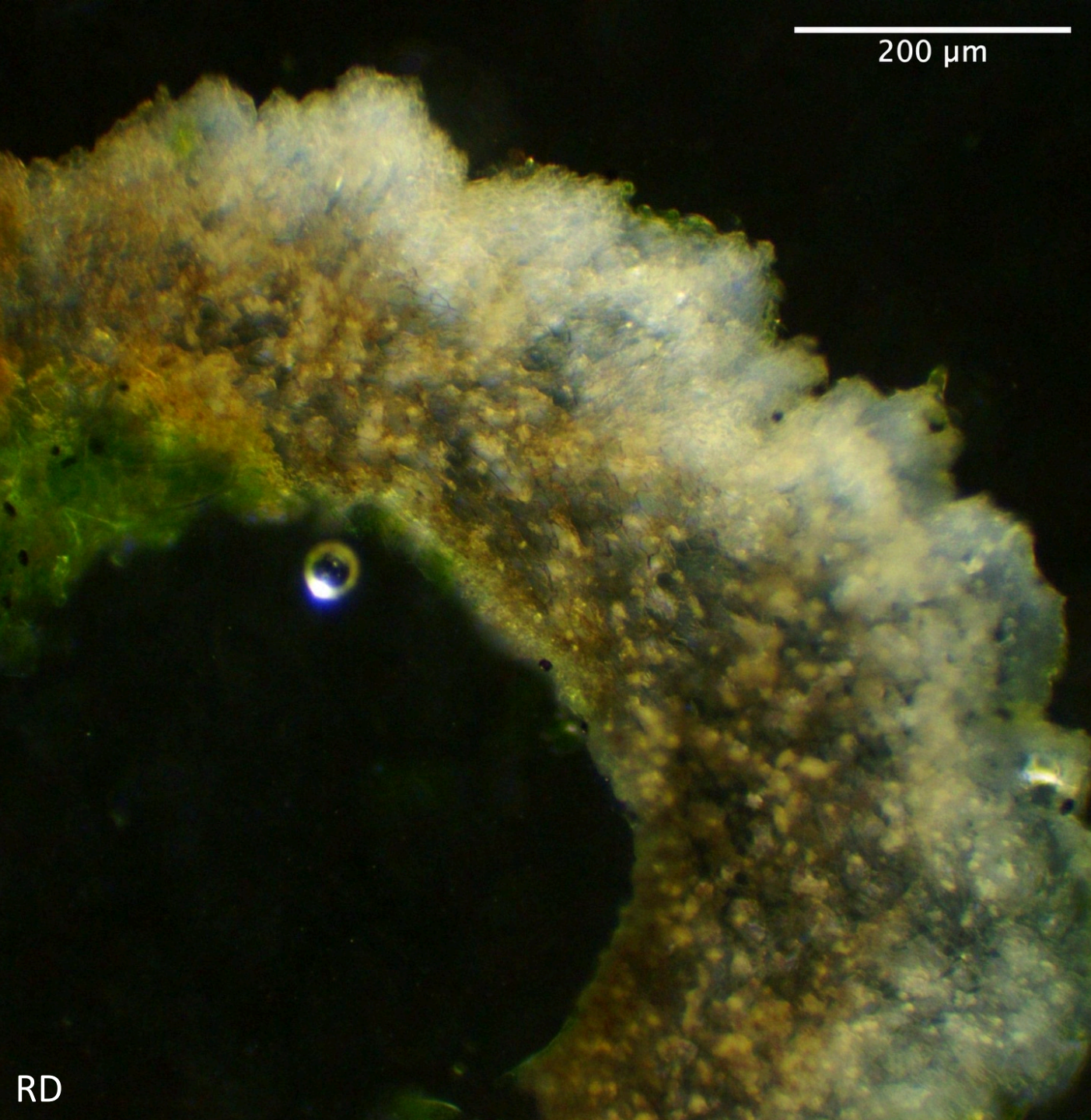


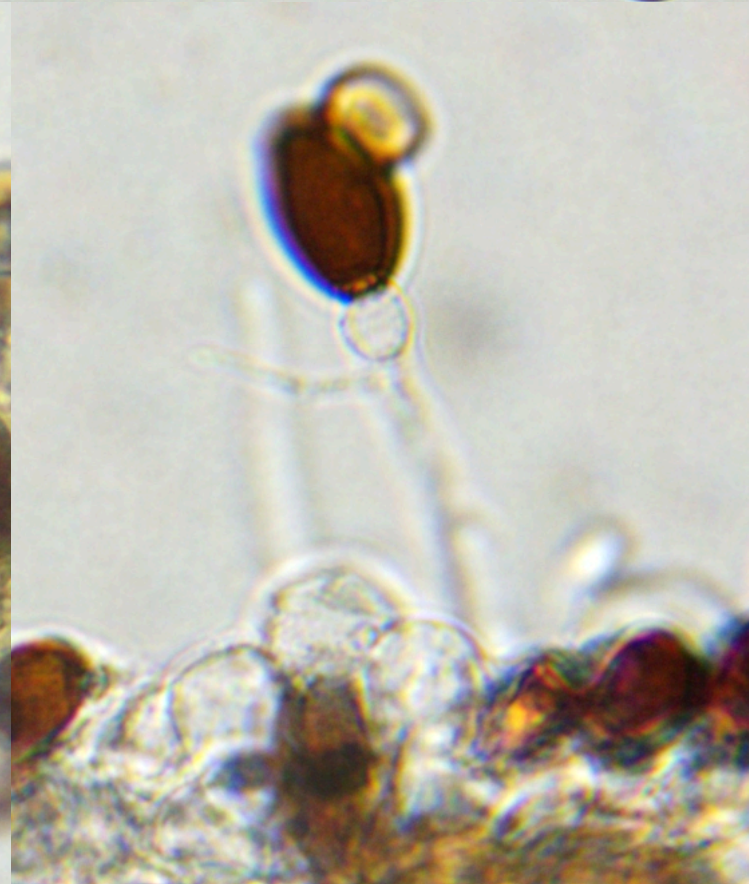
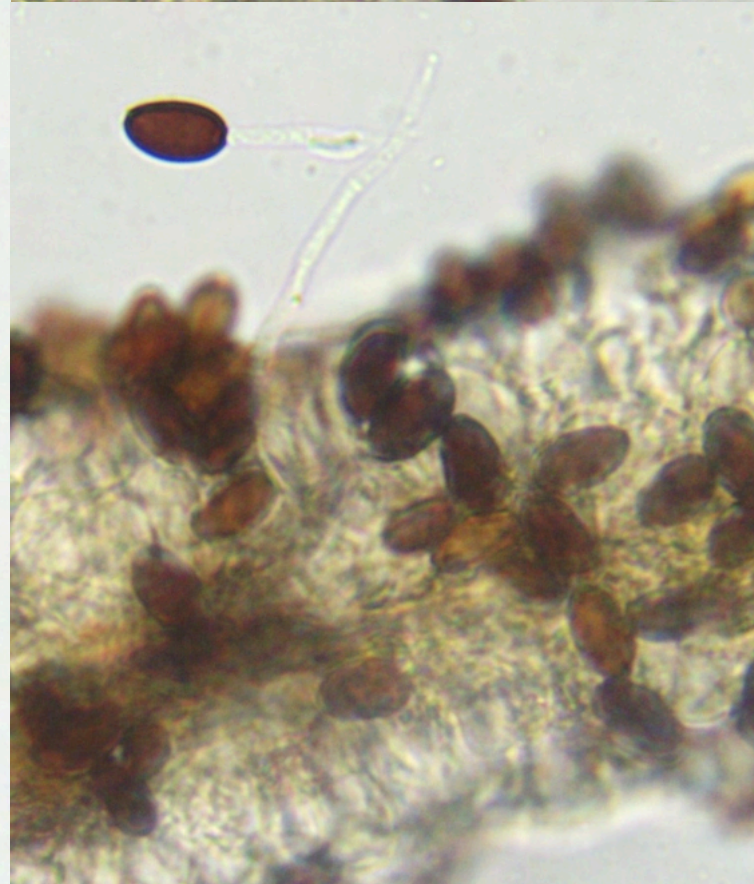
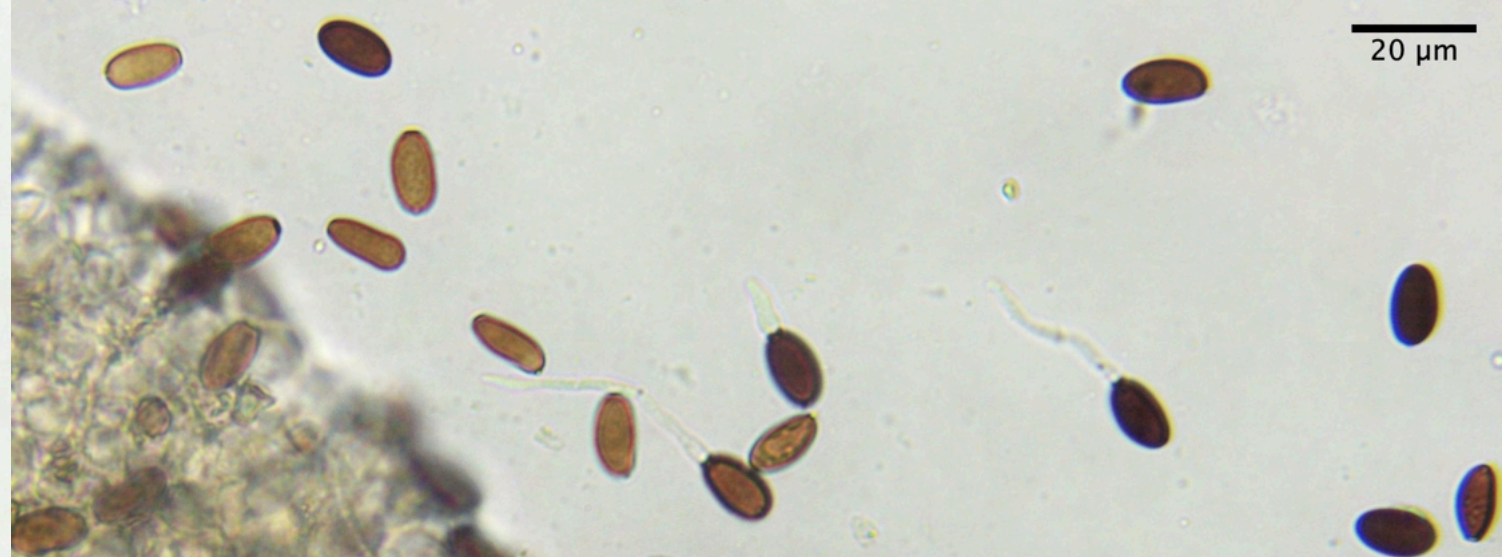
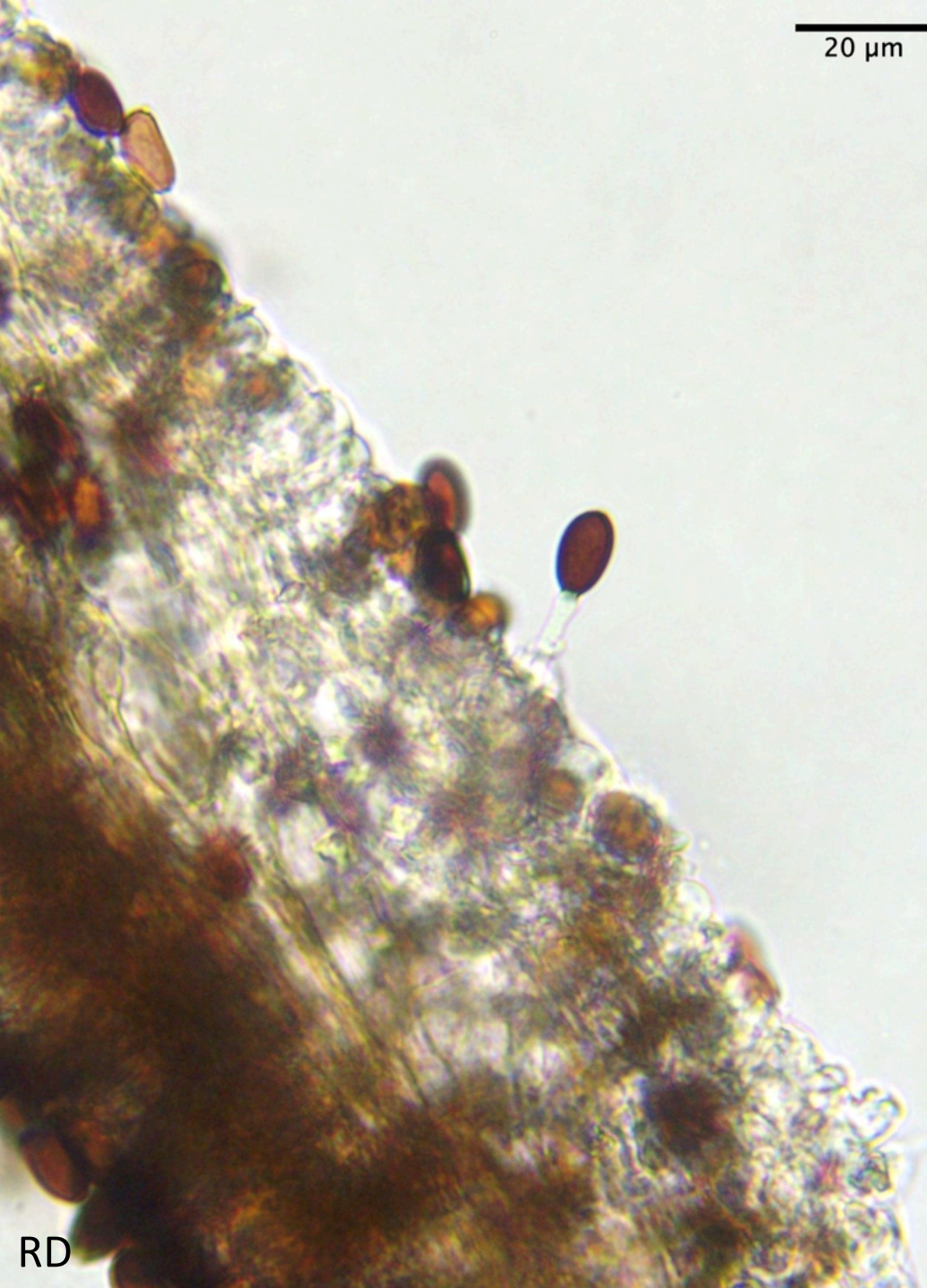
RD

50 μm



RD









Psathyrella arenulina
Dave G. Colton Dunes, Dec. 2022



Parasola cf. conopilea

Santa Monica Mts., RD NOV 2022

